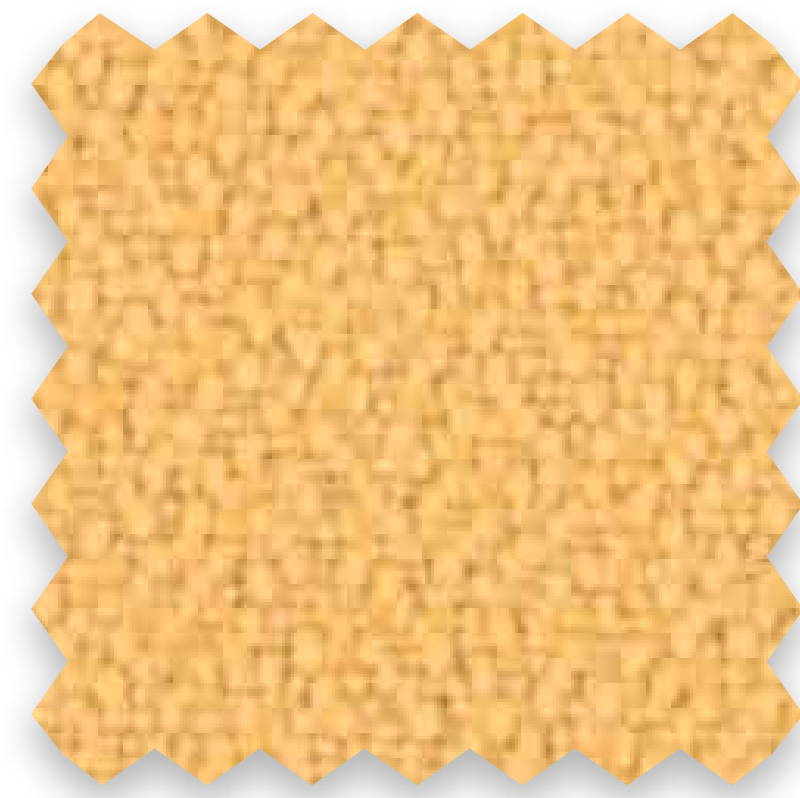


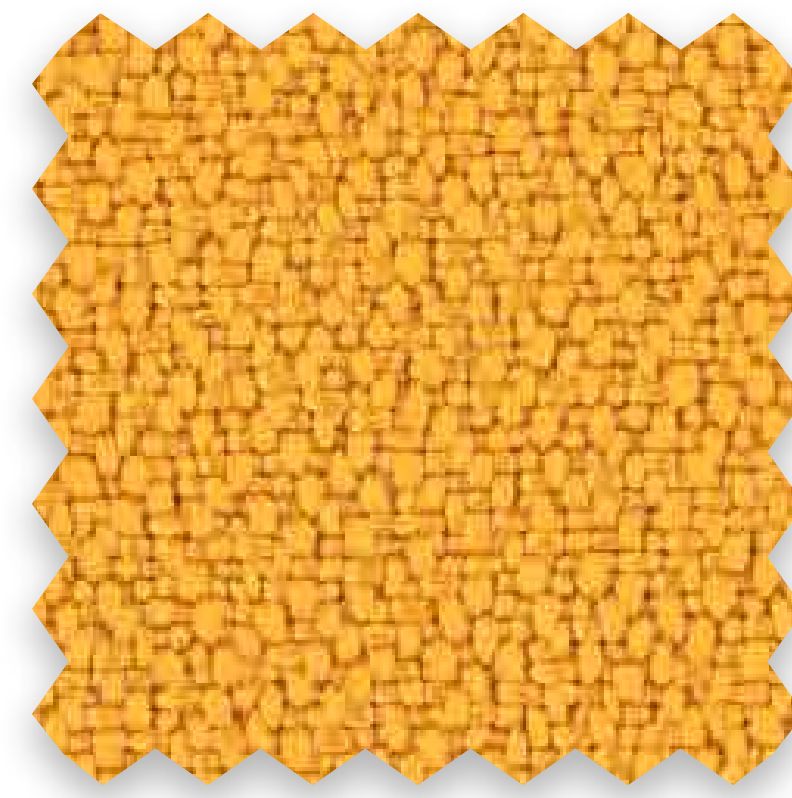


 **kesta
somomar**

- Basic Plus
- Malla



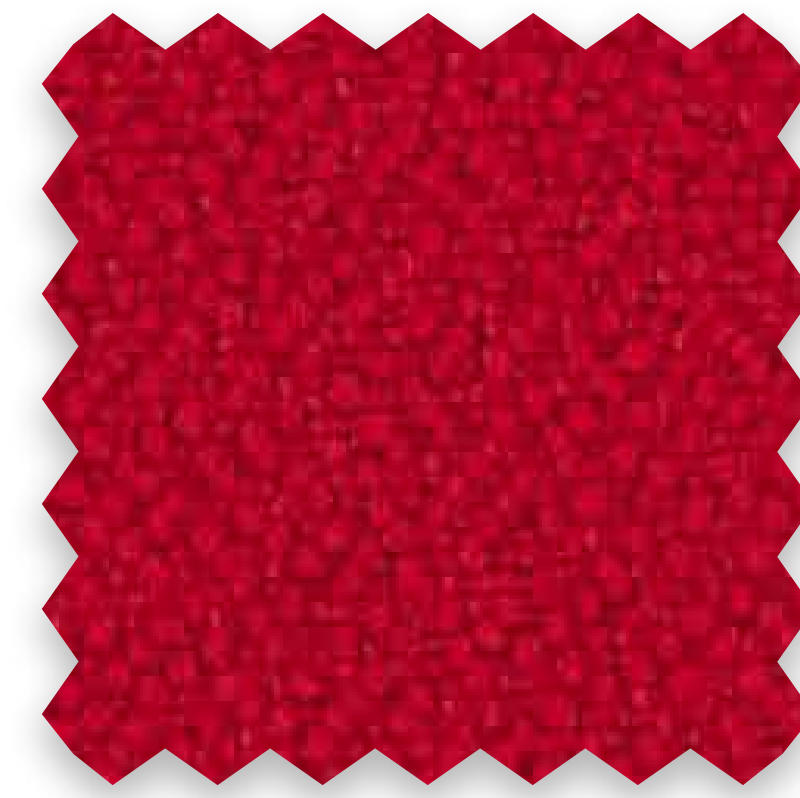
Amarillo pastel



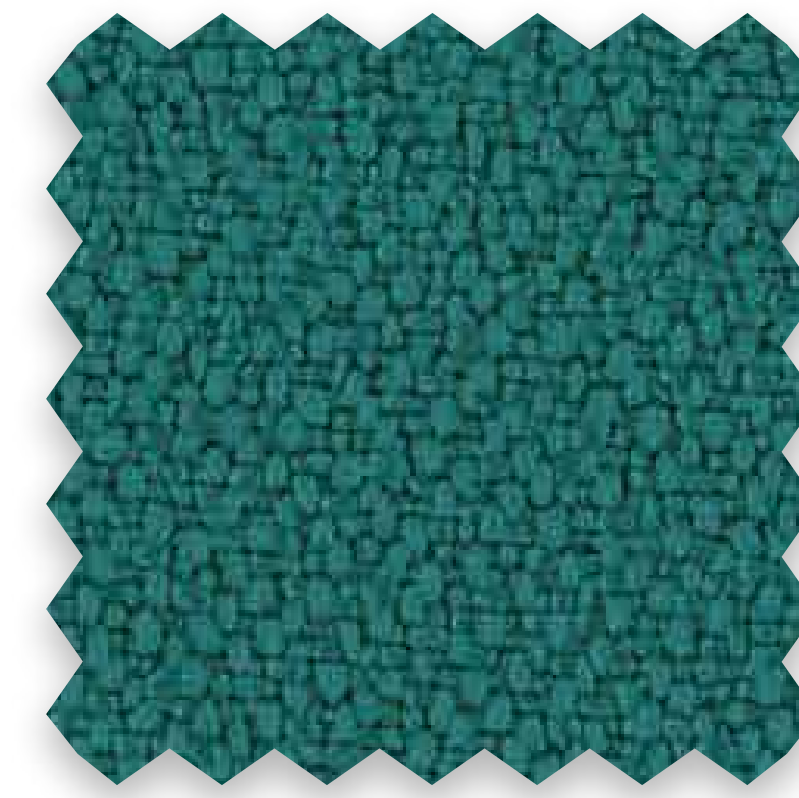
Amarillo



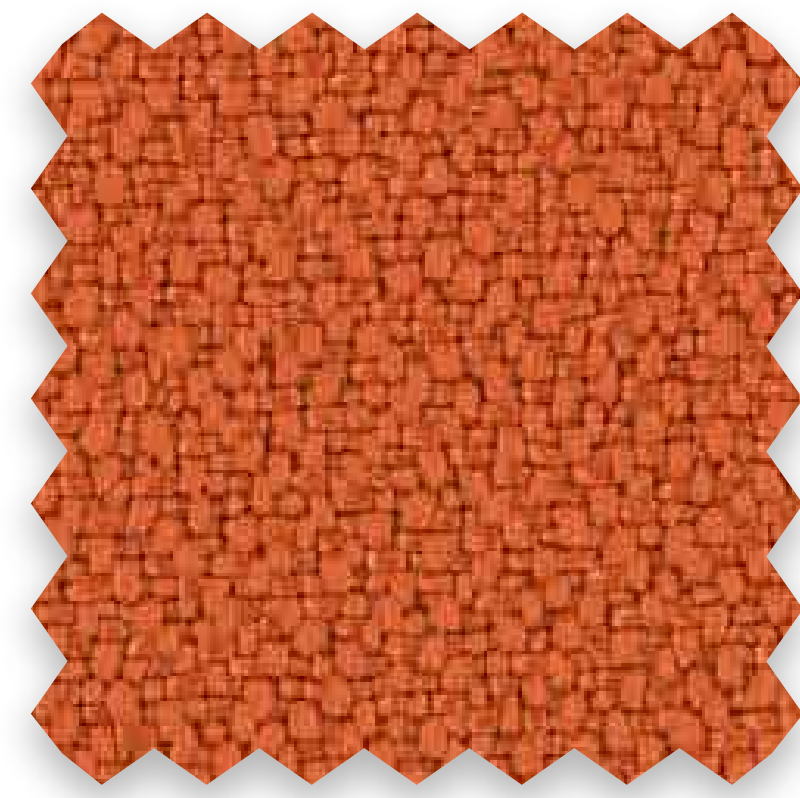
Beige



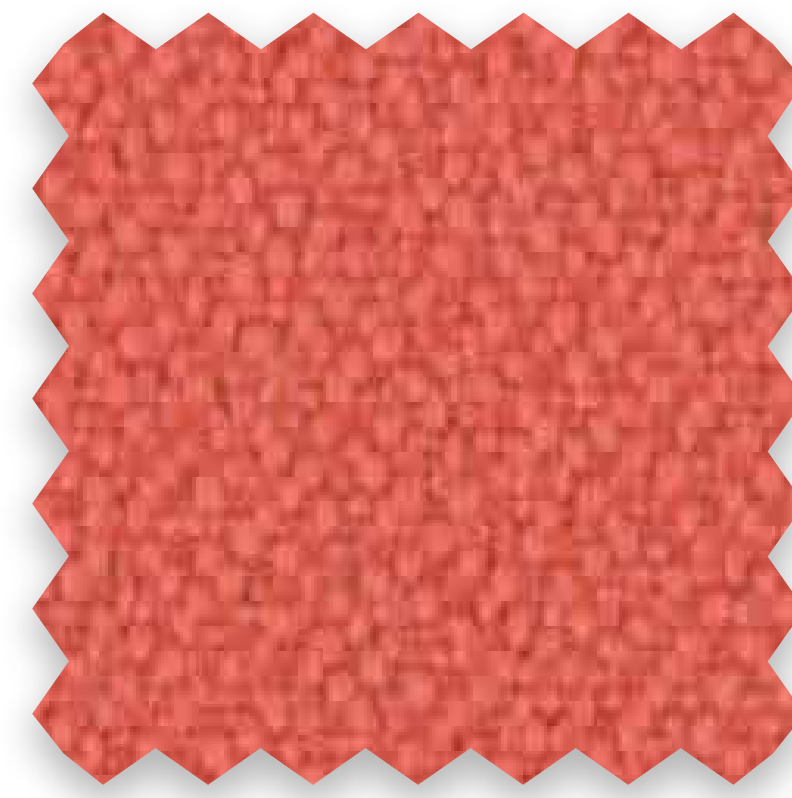
Rojo



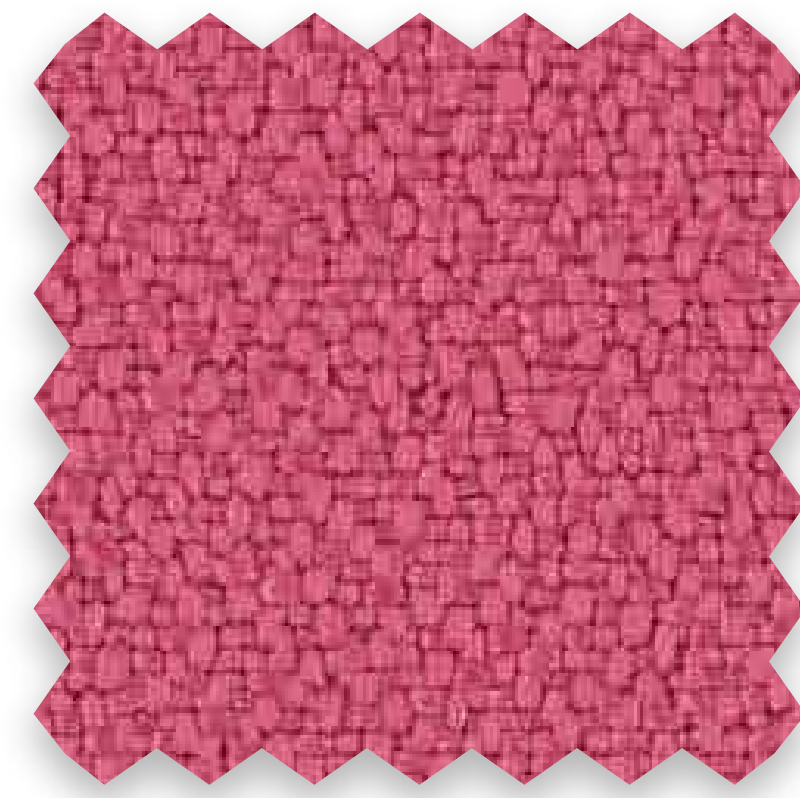
Verde



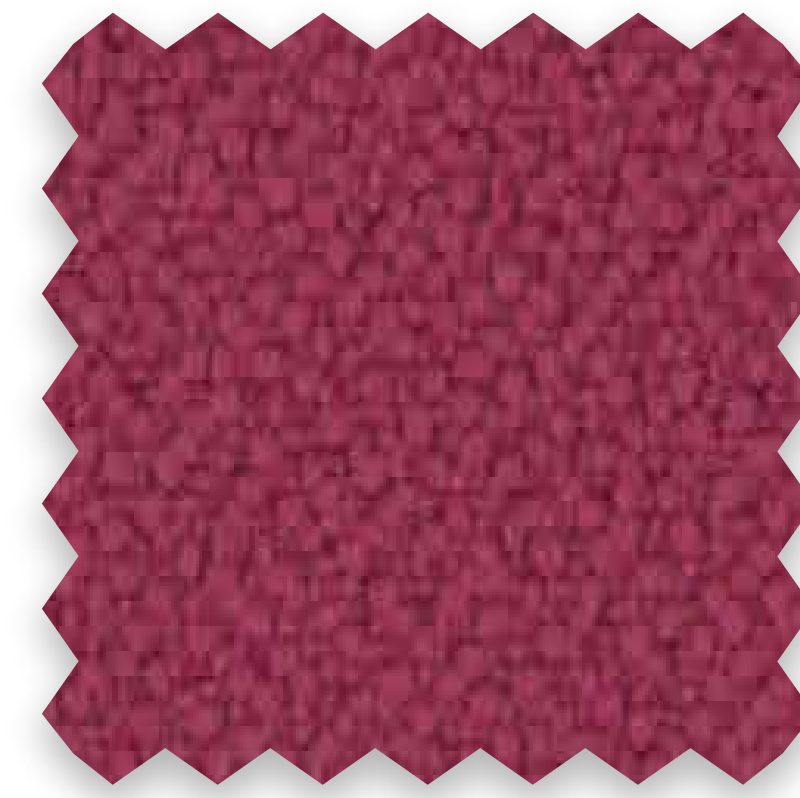
Naranja



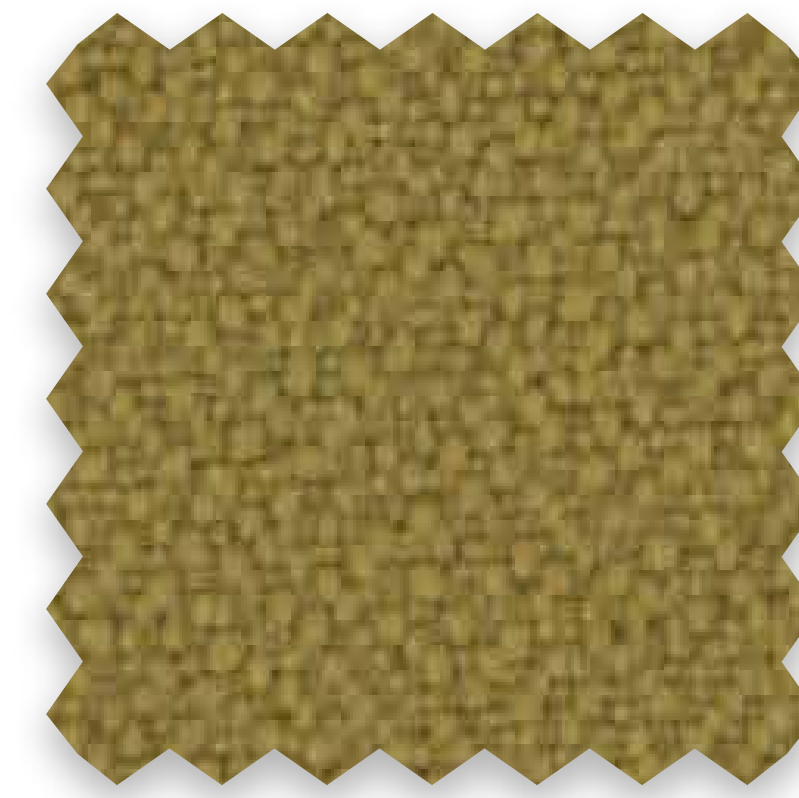
Rojo anaranjado



Rosa



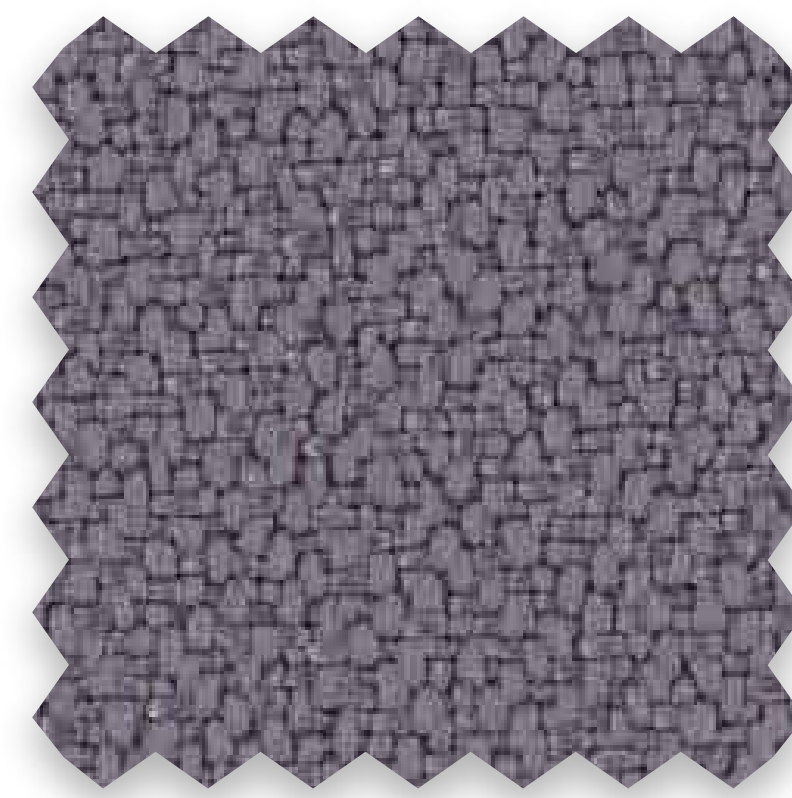
Granate



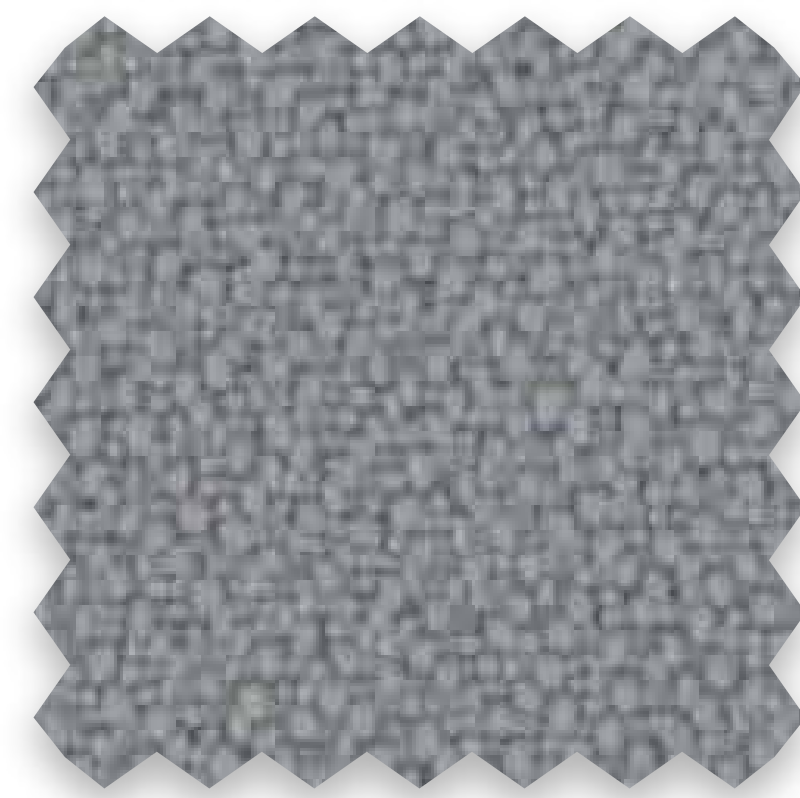
Verde oliva



Negro



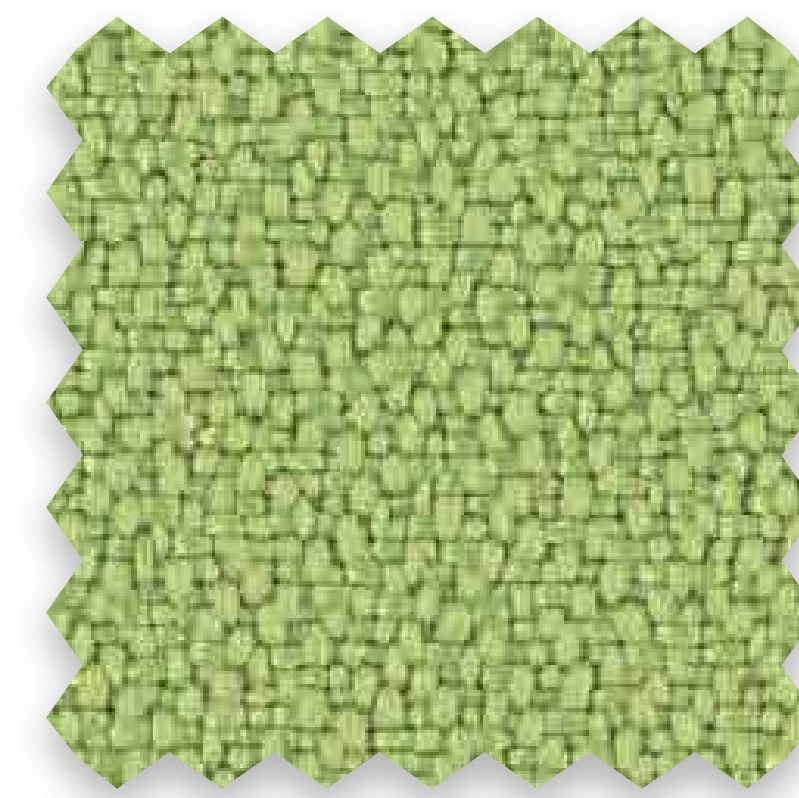
Gris oscuro



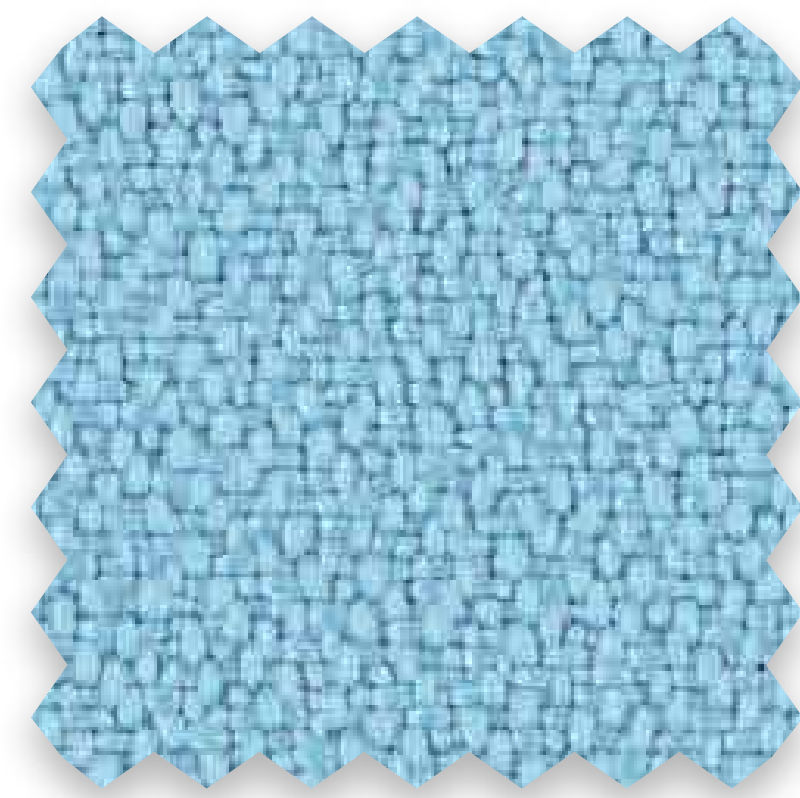
Gris claro



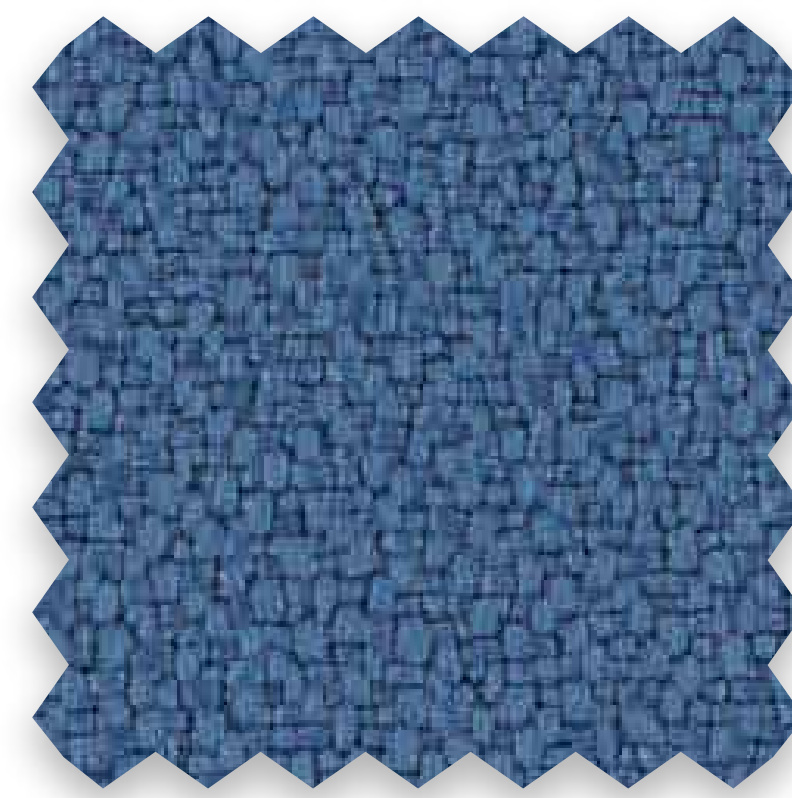
Morado



Verde pastel



Azul Pastel



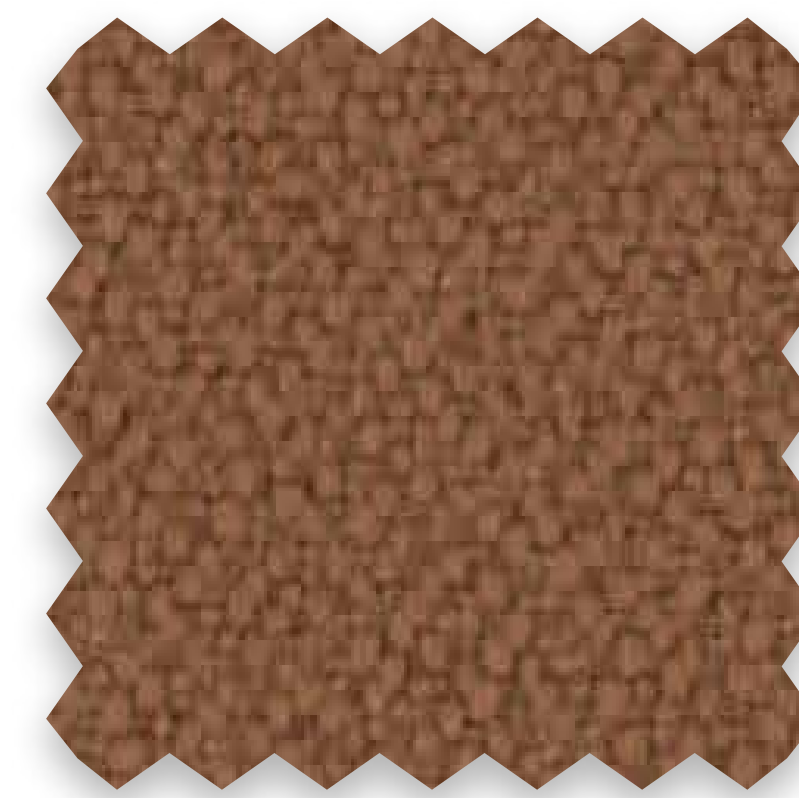
Azul acero



Azul



Azul marino



Marrón

Basic plus

Composición / Composition:
100% poliéster / polyester.

Ancho / Largeur: 1400 mm. +/- 2%.

Peso / Poids: 335 g/m2 +/- 5%.

Resistencia a la abrasión / Résistance à l'abrasion:
+80.000 ciclos martindale / cycles martindale. UNE EN 14465:2004 +A1:2007, UNE EN ISO 12947-2:1999.

Pilling: (4/5) UNE EN 14465:2004 +A1:2007, UNE EN ISO 12945-2:2001.

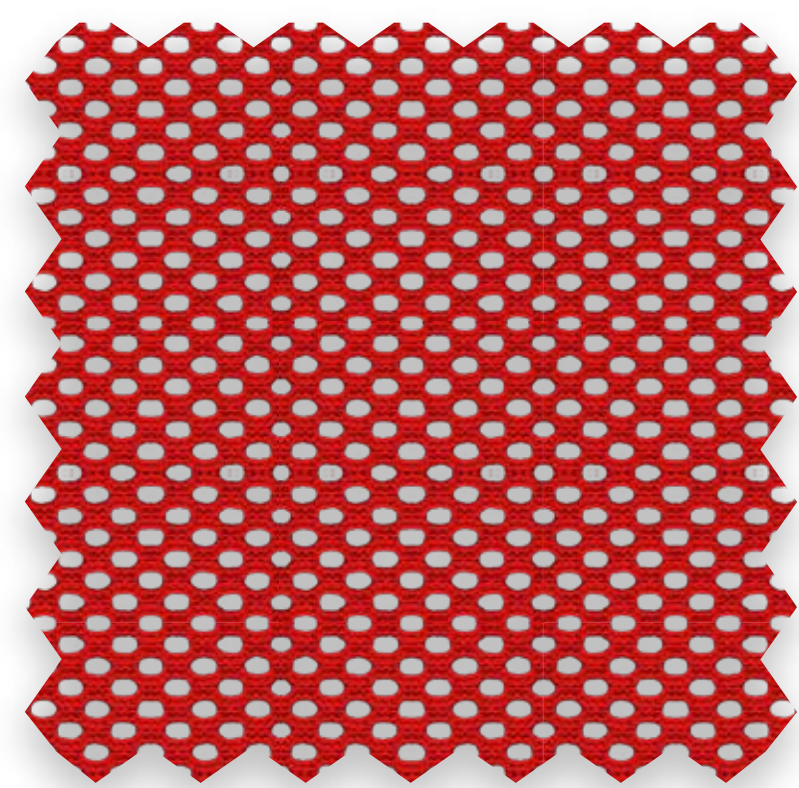
Solidez a la luz / Solidité à la lumière:
(5/6) UNE EN ISO 105-B02:2001 (Mét. 2).

Solidez al frote / Solidité au frottement:
- Seco / Sec: (4) UNE EN ISO 105-X 12:2003.
- Húmedo / Mouillé: (4) UNE EN ISO 105-X 12:2003.

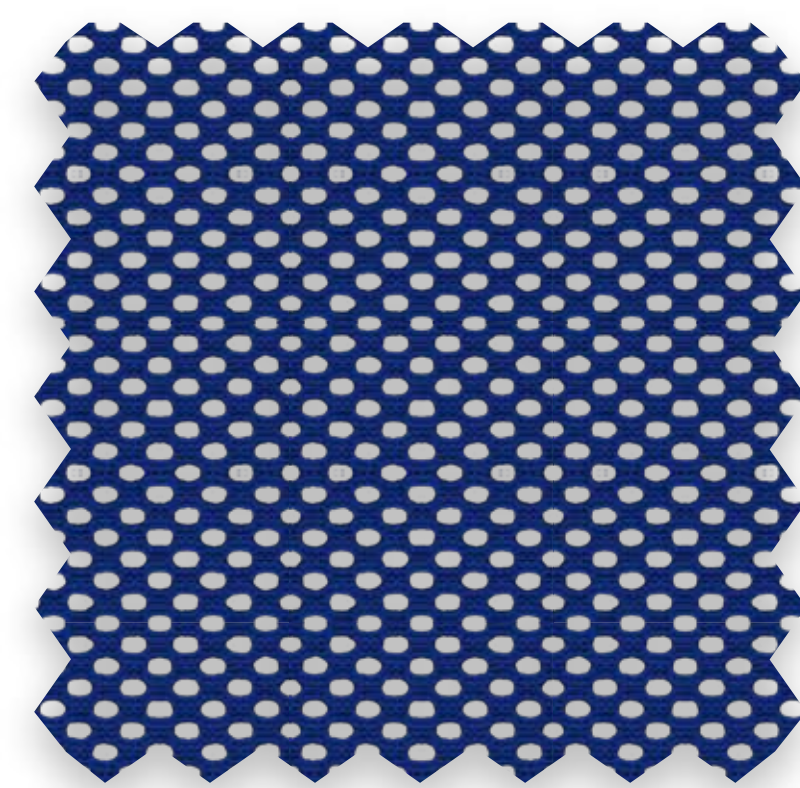
Mantenimiento / Maintenance:
Limpieza frecuente en seco con aspiradora. Limpieza con un paño húmedo y jabón neutro especial tapicería. / Nettoyage fréquent à sec avec de l'aspirateur. Nettoyage avec un chiffon humide et savon doux spécial tapisserie.

Inflamabilidad / Inflammabilité:
EN 1021-1:2006 (cigarro / cigarette).
EN 1021-2:2006 (cerilla / allumette).
Condiciones ignífugas dependiendo del tipo de foam y cola utilizados.
Conditions ignifugées selon le type de mousse et de la colle utilisée.

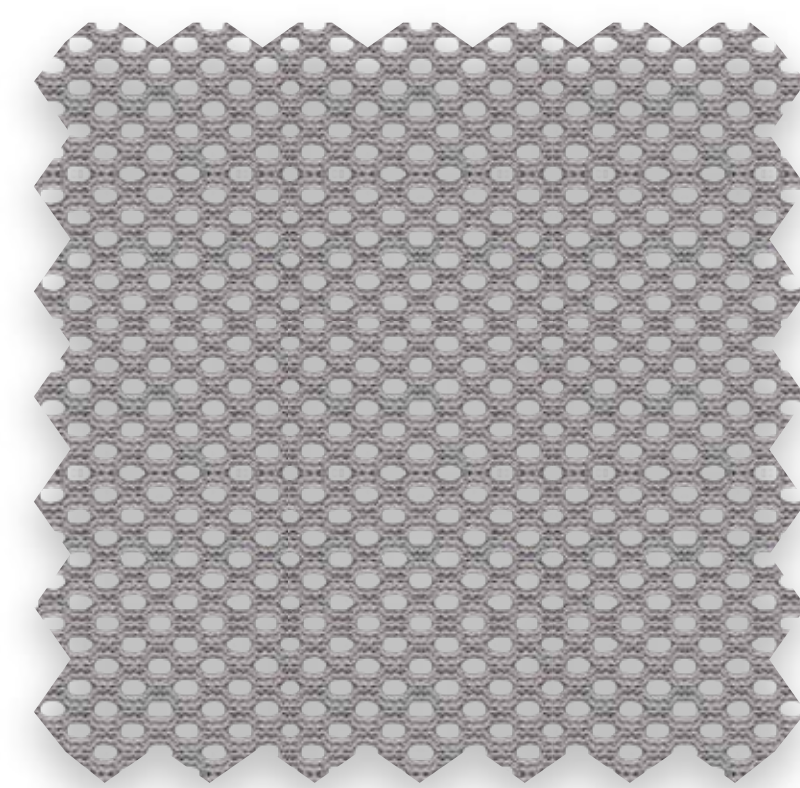
Absorción acústica / Absorption acoustique:
(>0,9) UNE EN ISO 10534-2:2002.



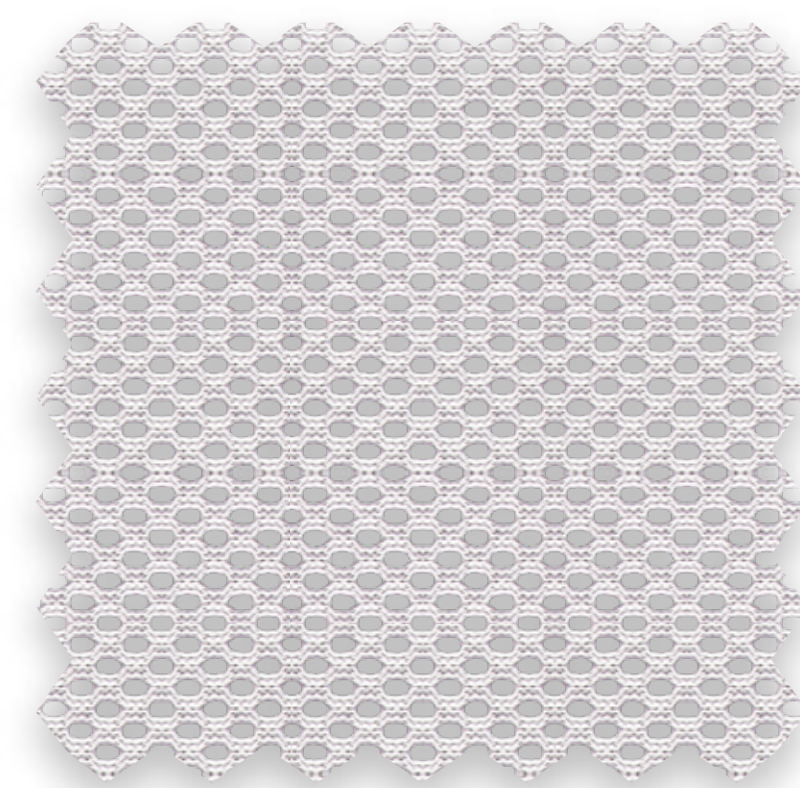
Rojo



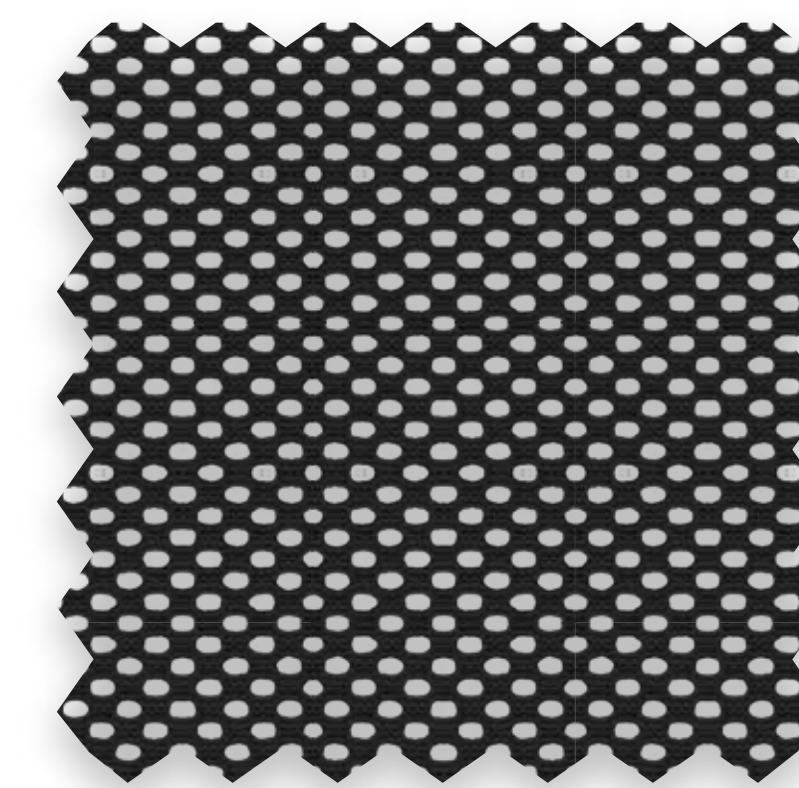
Azul



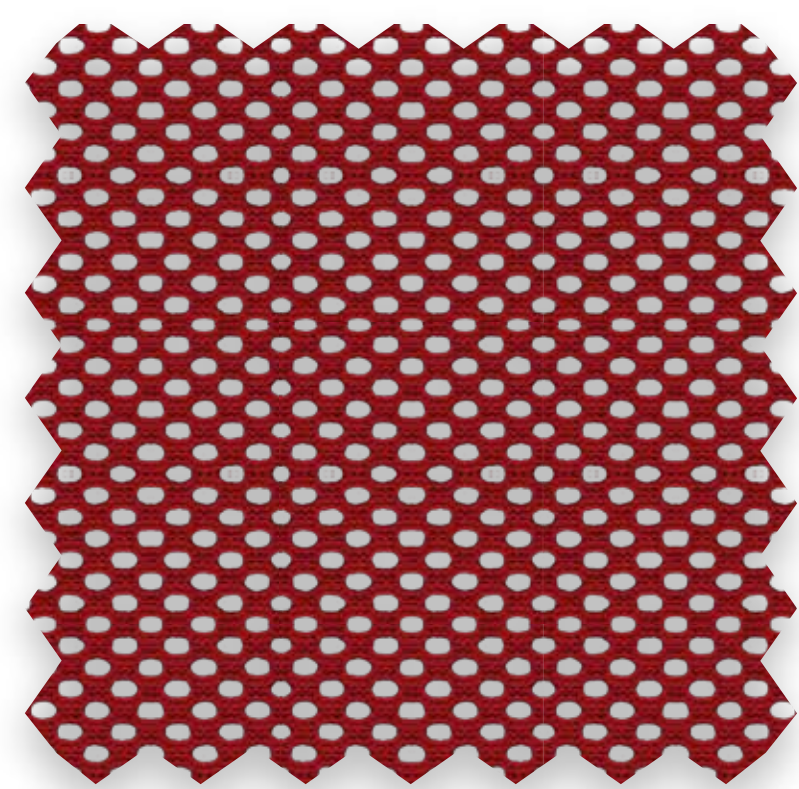
Gris



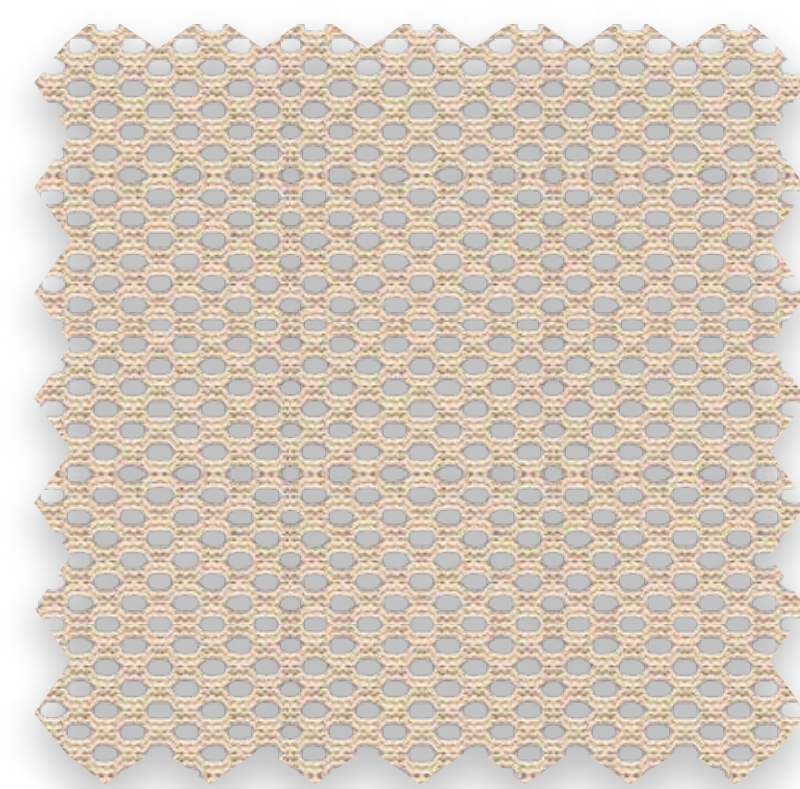
Blanco



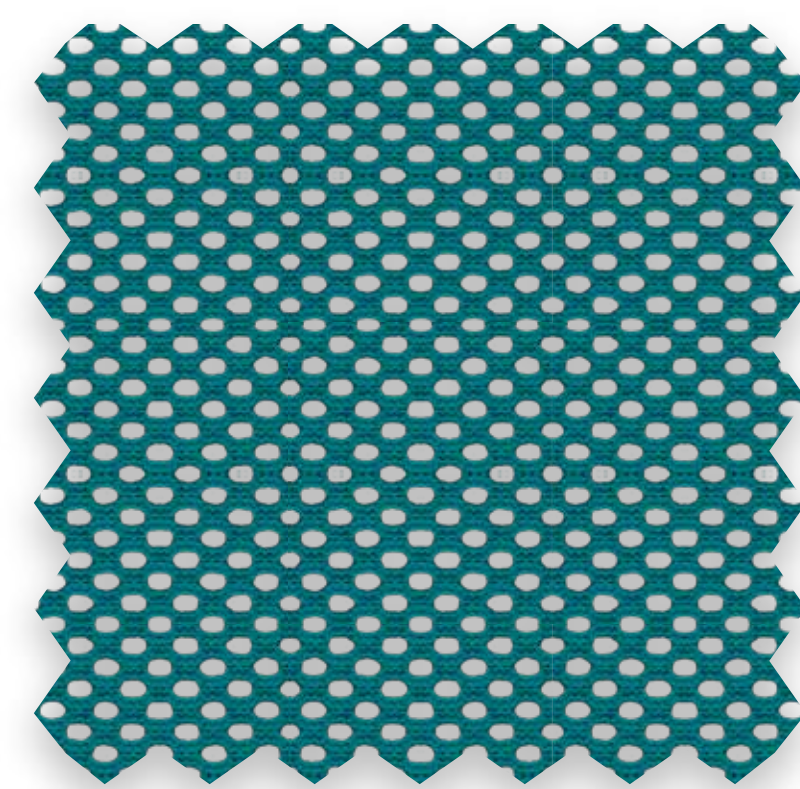
Negro



Rojo oscuro



Beige



Turquesa

Malla

Composición / Composition: 100% PES.

Ancho / Largueur: 1500 mm. +/- 2%.

Peso / Poids: 345 g/m2 +/- 15 g.

Espesor / Épaisseur: 1,0 mm. +/- 10%.

Resistencia a la abrasión / Résistance à l'abrasion:

(4/5) 5.000 ciclos / cycles.

ISO 12947-1, 12947-2.

Pilling: (4/5) ISO 12945-2.

Solidez a la luz / Solidité à la lumière: (6) ISO 105 B02.

Mantenimiento / Maintenance:

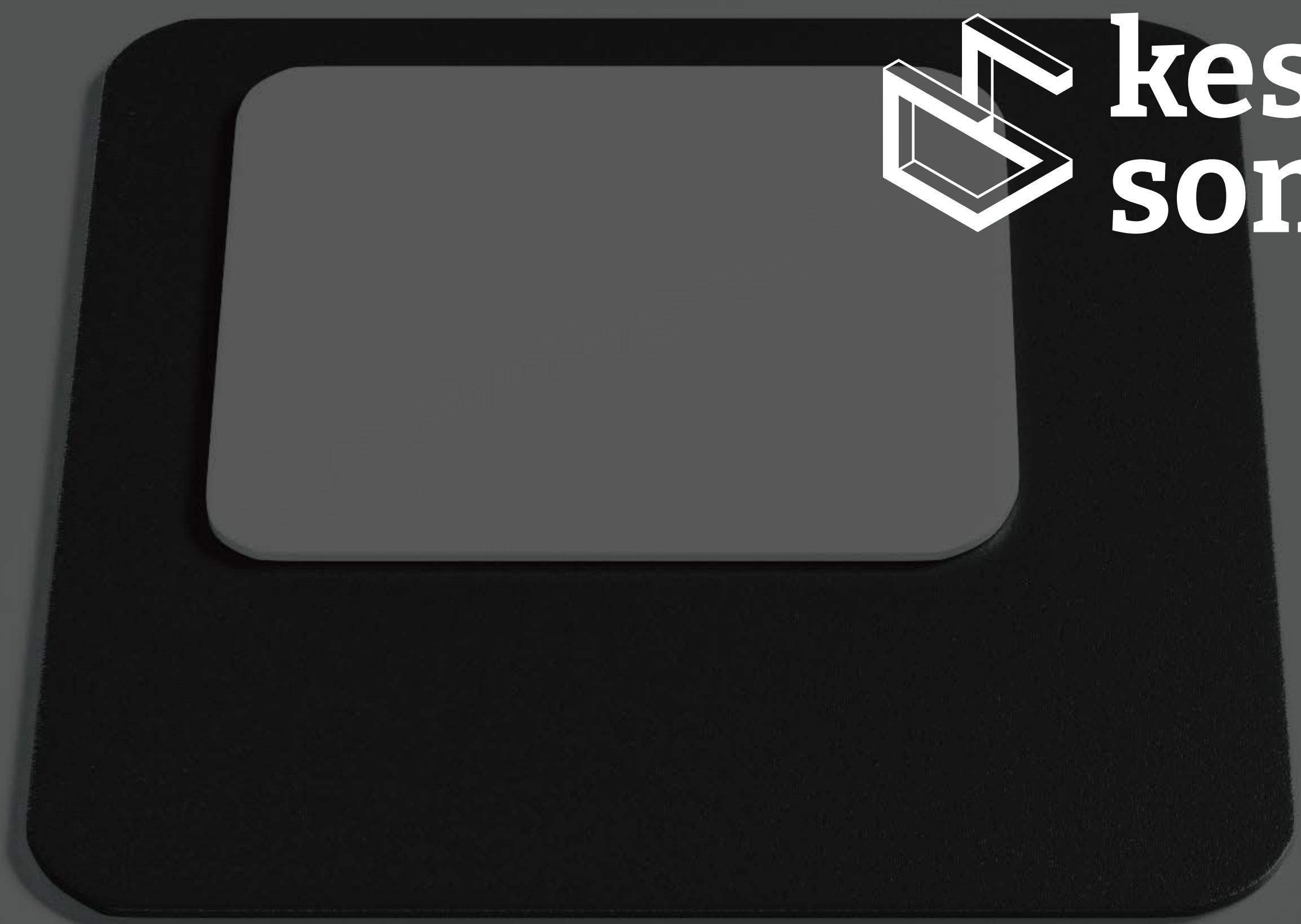
Limpieza frecuente en seco con aspiradora. Lavable hasta 40º C con un paño húmedo. No utilizar cloro ni tricloretileno. / Nettoyage fréquent à sec avec de l'aspirateur. Lavable jusqu'à 40º C avec un chiffon humide. Ne pas utiliser de chlore ou de trichloréthylène.

Inflamabilidad / Inflammabilité:

EN 1021-1:2006 (cigarro / cigarette).



**kesta
somomar**



**Polígono Cantabria I, Avenida Mendavia 15
26009 Logroño (La Rioja) España
Tlfno: (0034) 941.23.33.99
somomar@somomar-kesta.com
www.somomar-kesta.com**